

Shared Solar

Case Study

An aerial photograph of a large, multi-story apartment building with a grey roof. The roof is covered with numerous solar panels, arranged in several large rectangular sections. The building has multiple stories with balconies and air conditioning units. There are trees and landscaping around the building, and a parking lot with several cars is visible in the foreground. The entire image has a dark green overlay.

Canopy Apartments
Orlando, FL



Location:

Canopy Villa Apartments,
Orlando, FL

Solar system size:

392 kW

Building type:

Multi-family rental units

residences connected:

64 apartments



Outcomes for tenants

On average, each apartment benefitted from

~**\$97** / month

bill savings amounting to
\$1166 / year*

77.8%

energy bill reduction



* Savings calculation utilises average US utility bill of \$125 ([Forbes](#)). Budgets and savings are estimates and will vary based on site conditions, energy usage patterns, and tariffs. These savings take into account California's NEM new Net Billing Tariff policy for solar, which credits homeowners for excess (unused) solar energy generated and fed back into the grid.



Photos provided by ESA Solar, our trusted installer partner for this project.

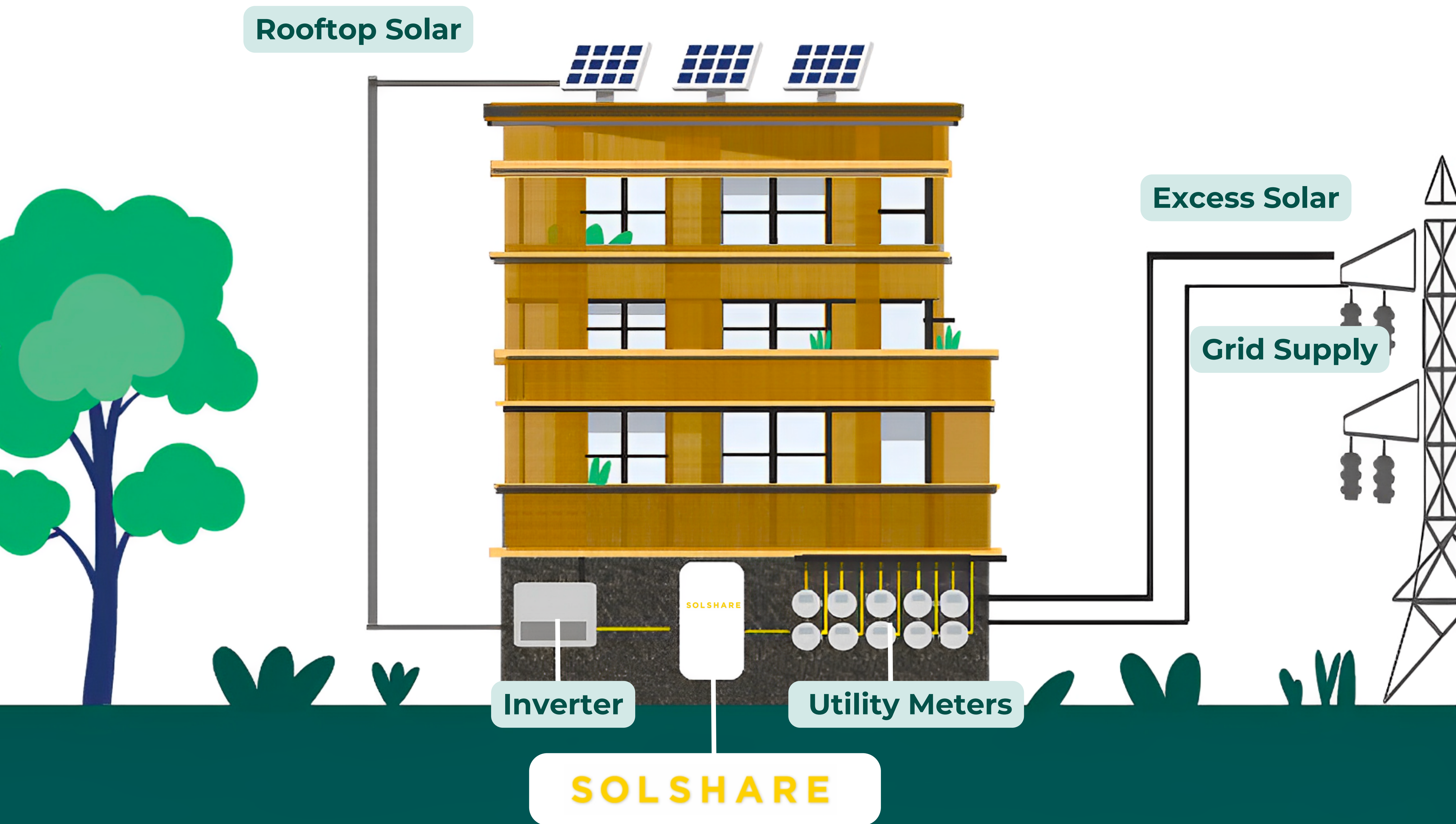
The internal energy services team at RENU Communities, has partnered with Allume on a multi-building rollout:



We are excited for this collaboration, leveraging this technology to accelerate the distribution of clean energy and improve resiliency.

Christopher Gray, Chief Technology Officer, RENU Communities

About SolShare



Unlocking shared **solar access** for apartments

How does it work?

Splits Solar:

Distributes solar from a single rooftop system to multiple apartments within a building.

Connected Centrally:

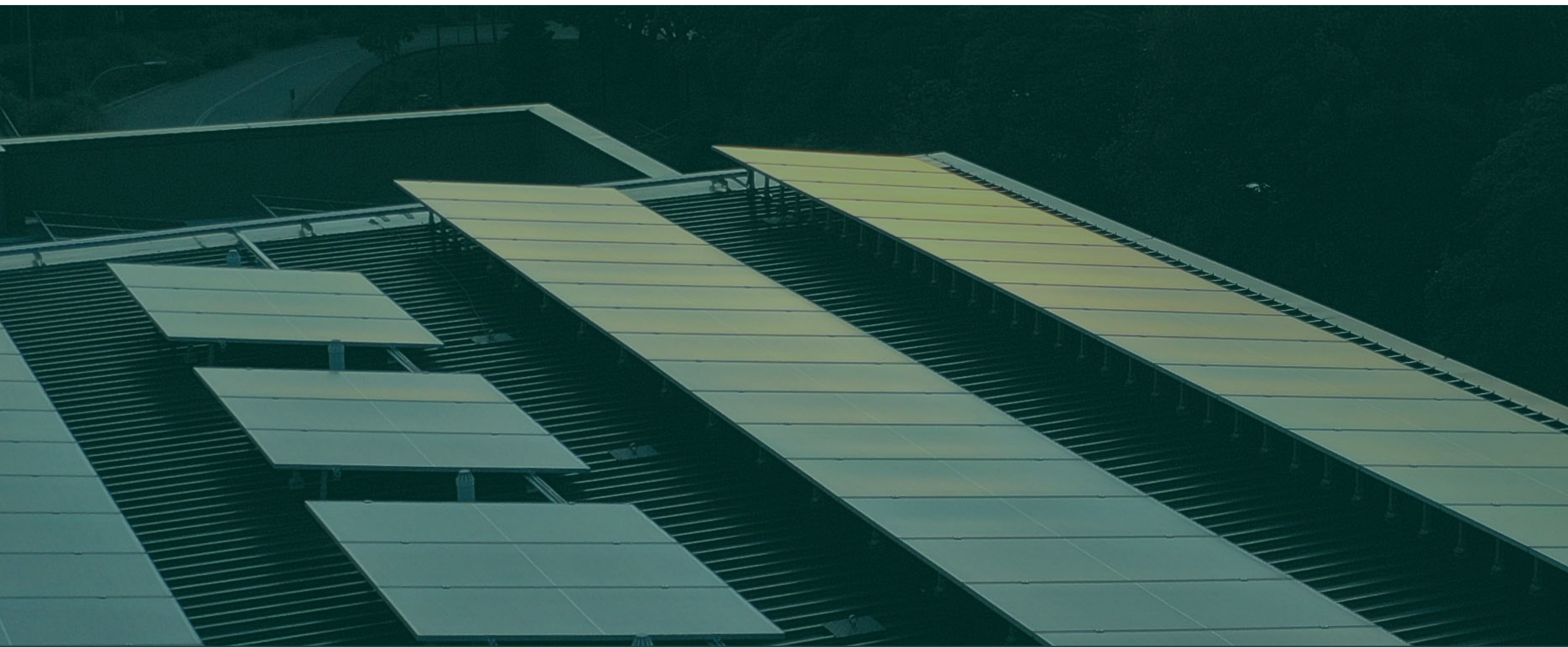
SolShare's outputs wire at the central meter panel, making for a non-invasive and cost effective installation process.

Physical power distribution:

Unlike virtual solutions, the SolShare enables on-site consumption of solar.



Contact



Contact:

Aliya Bagewadi

Director of Strategic Partnerships

aliya@allumeenergy.com

