



# Solar Installers

Tap into 4 million UK households with **shared solar for flats**

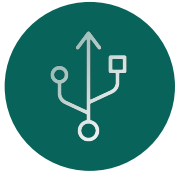
Social Housing | Build-to-Rent | New Build | Retrofit

# Benefits of Allume's SolShare



## Unlock a £9 billion market

Rapidly grow your business with the unique opportunity to install solar on flats.



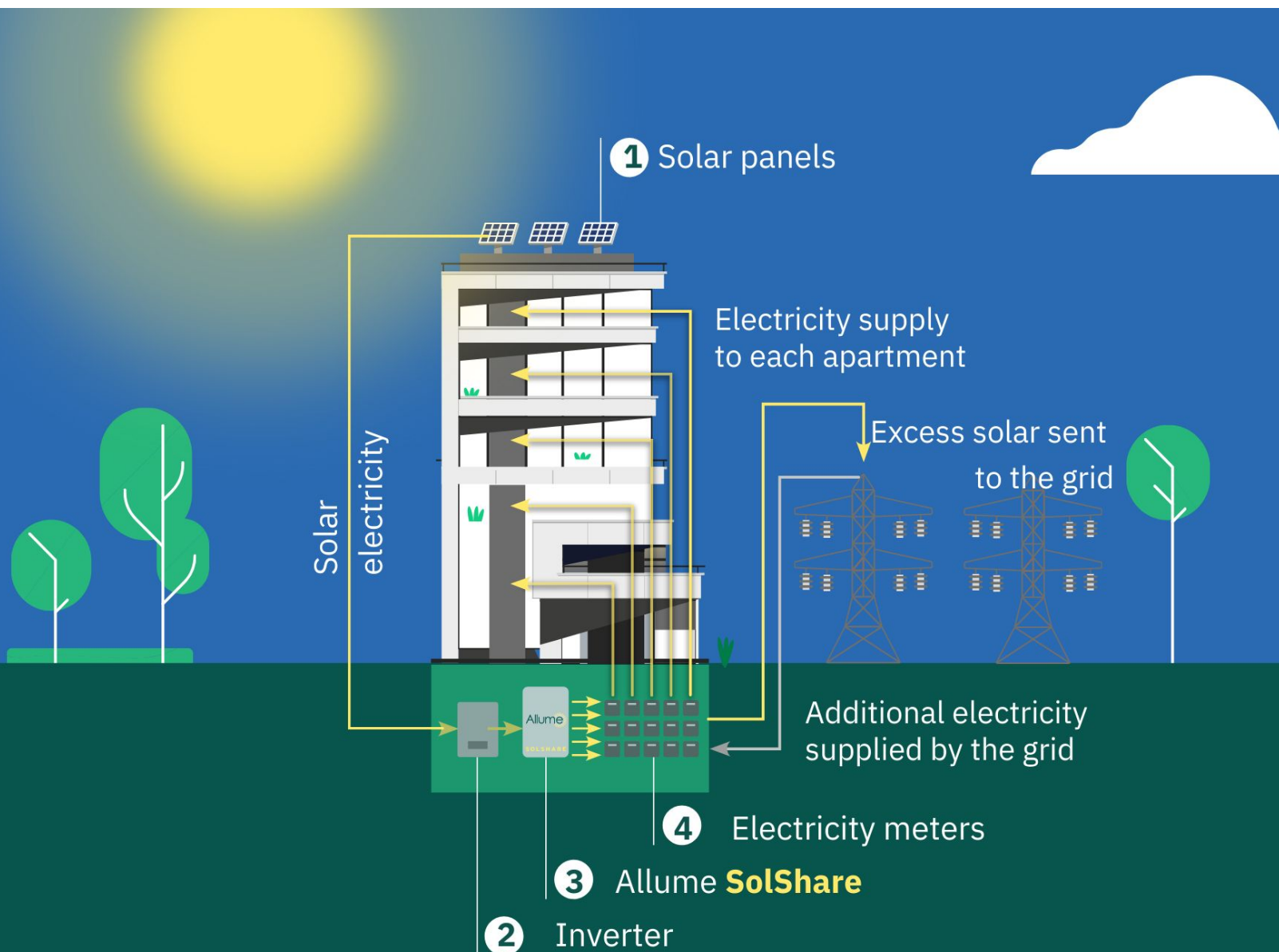
## Ease of installation

Simply run an AC cable from SolShare to each solar point of connection.



## Ongoing revenue with SolCentre

Automated energy reports sent directly to the asset owner.



# Learn about Allume's SolShare

SolShare enables the direct connection of multiple flats to a single rooftop solar PV system. This breaks down the technical and ownership barriers that have historically prevented apartment residents from accessing cheaper and cleaner energy from the sun.



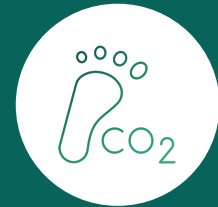
**5-15 Points**

increased SAP and EPC rating



**up to 60%**

lower energy bills



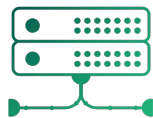
**CO<sub>2</sub>**

reduced carbon footprint

## How it Works



Creates a direct connection of solar PV to multiple flats, behind-the-meter.



Allows you to specify the exact kWp each flat receives based on their SAP and EPC requirements.



Sends solar power to each resident when they need it, maximising their bill savings.



# Successful Markets

## New Build

### Benefits for the customer

- ✓ Solar is one of the most affordable ways to increase SAP & EPC.
- ✓ Tailorable kWp for SAP/ EPC goals.
- ✓ Saving energy bills for residents.

### Benefits for the installer

- ✓ Increase project value from a small Landlord system to a large system to connect every flat.

## Build-to-Rent

### Benefits for the customer

- ✓ All the benefits from New Build plus:
- ✓ Access to a comprehensive energy monitoring and performance report. Often a requirement for B2R projects.
- ✓ Fully automated energy and performance report sent directly to the asset owner.

### Benefits for the installer

- ✓ All the benefits of New Build plus:
- ✓ Additional ongoing revenue with SolCentre's yearly subscription fee for every project.
- ✓ Enhanced customer trust and satisfaction.

## Social Housing

### Benefits for the customer

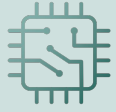
- ✓ Achieving sustainability targets.
- ✓ Saving energy bills for residents.
- ✓ Tackling fuel poverty.

### Benefits for the installer

- ✓ Unlock tens of thousands of flats under social management.
- ✓ Retrofit funding available:
  - ECO
  - SHDF
  - ORP
  - LLDC
  - HUG
  - SHNZHF



# Ideal Projects



## Specific EPC requirements

With SolShare, you can fine-tune SAP scores by allocating the exact kWp to each flat to achieve EPC goals.



## Long term asset owners

Long term asset owners are concerned about system maintenance and replacement costs. SolShare dramatically reduces the number of possible points of failure, increasing customer confidence.



## Multi-faceted roof

Roofs that have different angles can make individual systems impossible to fairly allocate. Having a shared solar system solves this challenge.



## Solar + batteries

SolShare's centralised battery storage eliminates the need for individual fireproofing requirements in each apartment.



## ECO4 projects

ECO4 funding projects benefit from a 45% uplift in funded eligibility due the SolShare being deemed by Ofgem as a "significant innovation measure".



## SolCentre

SolCentre provides automated energy and system performance monitoring that is often a requirement for Housing Associations and Build to Rent customers.



# Becoming a certified installer

Becoming a certified SolShare installer is easy, with all training and certification completed online.

The comprehensive training covers everything that you and your team need to pitch, design, quote, install, commission, and maintain a SolShare solar system.

Allume are also on hand every step of the way to provide assistance if needed.

## Pre-Qualification Questionnaire

Complete and submit Allume's PQQ.

## Training

Upon successful review you, and any of your relevant team and subcontractors, will be enrolled in online training modules.

## Certification

You will receive a unique certification number from Allume, which is required to purchase, install, and commission SolShare.

## Ongoing support

We'll provide you with all the technical, commercial, and marketing support that you may need.

**Let's get you started!**



# SolCentre

## Allume's Automated Data Platform

Maximise value for SolShare asset owners with SolCentre's comprehensive energy monitoring and performance reporting. By integrating SolCentre into your maintenance package for SolShare installations, you're not just providing a service; you're delivering a energy management solution that's completely automated.

## Benefits of SolCentre



Gain additional ongoing revenue with yearly subscription fees for every SolShare.



Fully automated report; sent directly to the asset owner.



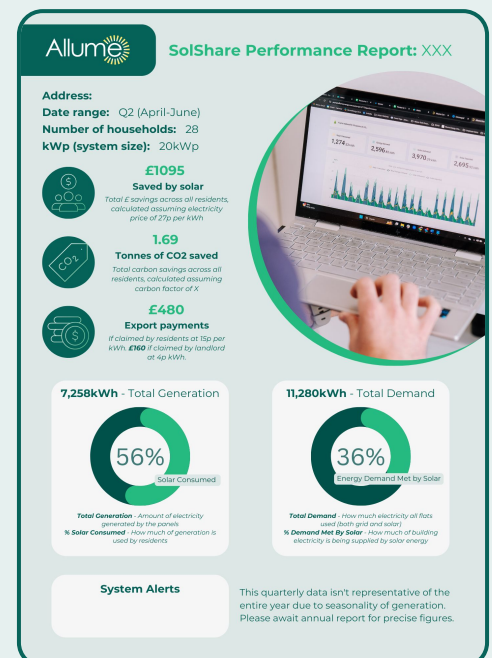
Enhance customer trust and satisfaction by offering insights into energy consumption and performance metrics.

## Included in your reports:

- Full energy data for every flat
- Bill and CO2 savings for every flat
- System faults and underperformance alerts

## Scaling your business with SolCentre

When an asset owner purchases SolCentre, as the installer, you will be placed on their procurement list, unlocking all future opportunities for your business.



Get in touch with the team to learn more

# Get Started

Simply contact us to start your journey to unlocking solar for flats.



## Nick Williams

Technical Partnership Manager  
[nick.williams@allumeenergy.com](mailto:nick.williams@allumeenergy.com)



Or submit a general enquiry on our [website](#).



Housing Digital  
Innovation Awards  
Winner 2023



Energy Innovation  
Awards  
Winner 2022



Start Up Energy  
Transition Award  
Winner 2021



Carbon Neutral  
Awards  
Winner 2020



Clean Energy Council  
Innovation Award  
Winner 2020